

LIST OF CANDIDATES FOR

NOV. 7, 2017

GOVERNOR

Edward W. "Ed" Gillespie	R
Clifford D. Hyra	L
Robert Lee (nq)	I
Ralph S. Northam	D

LIEUTENANT GOVERNOR

Justin E. Fairfax	D
Bobby A. "BJ" Junes	I
Jill H. Vogel	R

ATTORNEY GENERAL

John D. Adams	R
Mark R. Herring	D

MEMBER HOUSE OF DELEGATES-62ND

Sheila Bynum-Coleman	D
Riley Edward Ingram	R
Tavorise K. Marks (nq)	D

MEMBER HOUSE OF DELEGATES-63RD

Lashrece D. Aird	D
------------------	---

MEMBER HOUSE OF DELEGATES-64TH

Emily M. Brewer	R
Rebecca S. Colaw	D

P. G. BOARD OF SUPERVISORS-DISTRICT 1

Floyd M. Brown, Jr
Joseph T. Wallace
Shayne L. Bridgman

P. G. BOARD OF SUPERVISORS-DISTRICT 2

W. A. "Bill" Robertson, Jr.
William F. "Bill" Gandel
Marlene J. Waymack

P. G. SCHOOL BOARD-DISTRICT 1

Rob. E. L. Eley III
Sharon M. Jadrnak

P. G. SCHOOL BOARD-DISTRICT 2

Leila R. Holmes
Chris A. Johnson

P.G. TREASURER

"Special Election"

Filing deadline is Aug. 18, 2017



PRINCE GEORGE COUNTY VOTING PRECINCTS

DISTRICT 1

- 101 **RICHARD BLAND**
Richard Bland Barn Theater
11301 Johnson RD
Petersburg, VA 23805
15th S - 64th HD-4th Cong
- 102 **TEMPLETON**
South Elementary School
13400 Prince George DR
Disputanta, VA 23842
15th S - 64th HD-4th Cong
- 103 **UNION BRANCH**
Union Branch Baptist Church
3356 Union Branch RD
Petersburg, VA 23805
16th S-64th HD-4th Cong
- 104 **RIVES**
Walton Elementary School
4101 Courthouse RD
Prince George, VA 23875
16th S-62, 63,64 HD-4th Cong
- 105 **HARRISON**
Harrison Elementary School
12900 East Quaker RD
Disputanta, VA 23842
15th S-64th HD- 4th Cong

DISTRICT 2

- 201 **BLAND**
N.B. Clements Jr. High School
7800 Laurel Spring RD
Prince George, VA 23875
15th S-64th HD- 4th Cong
- 202 **BLACKWATER**
PG parks & Rec Comm.Ctr
11100 Old Stage RD
Prince George, VA 23875
15th S-64 HD- 4th Cong
- 203 **BRANDON**
Burrowsville Community Ctr
18701 James River DR
Disputanta, VA 23842
15th S-64th HD-4th Cong
- 204 **COURTS BLDG**
Courts Bldg.
6601 Courts DR
Prince George, VA 23875
16th S- 63,64 HD-4th Cong
- 205 **JEFFERSON PARK**
Faith Baptist Church.
5501 Middle RD
Prince George, VA 23875
16th S- 62, 63 HD- 4th Cong

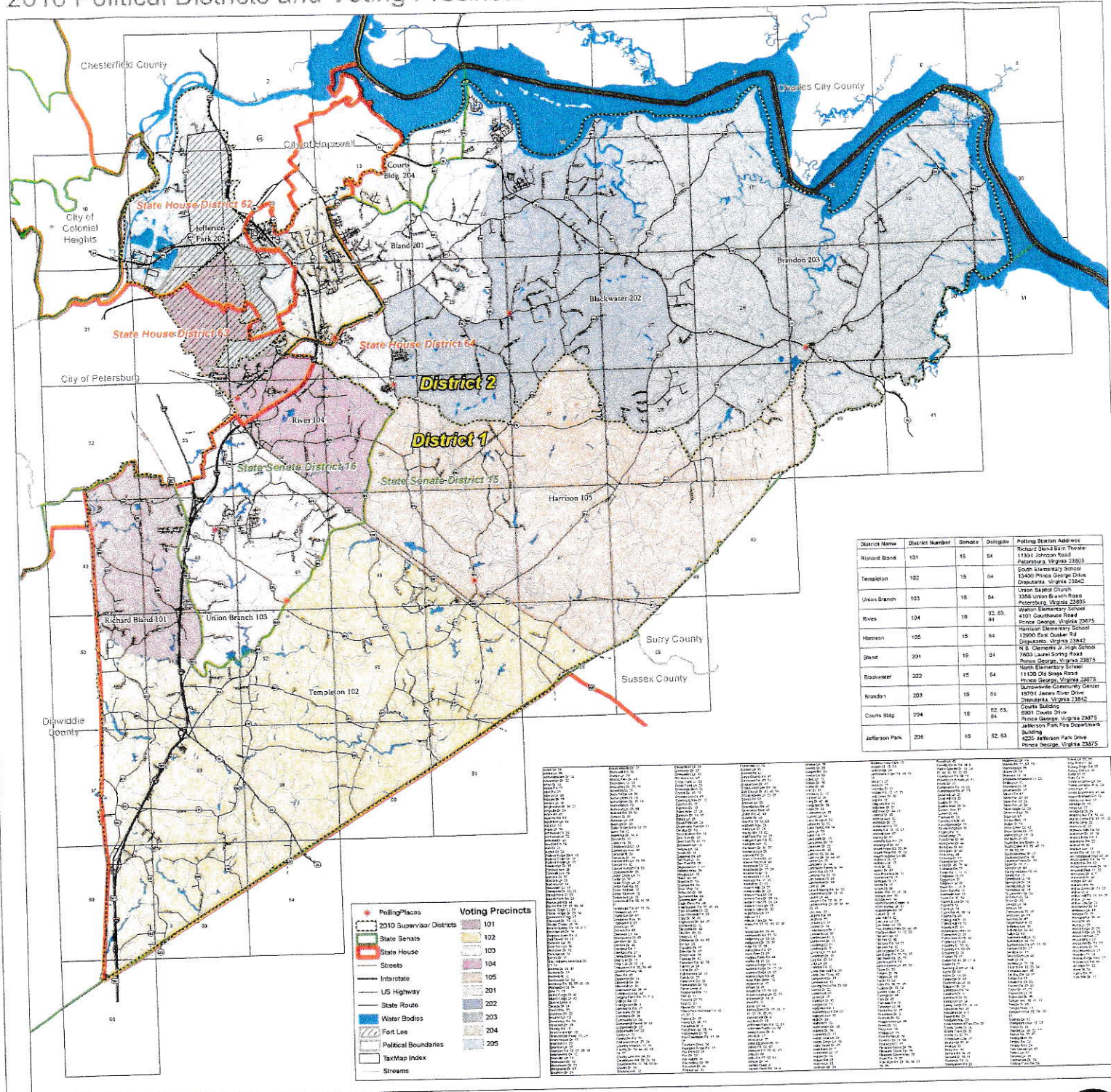
CAP PRECINCT

(Central Absentee Precinct, tabulates all absentee ballots)
6602 Courts Dr., Ste. 243 (Registrar's Office) P.G.23875

ALL OF PRINCE GEORGE CO NOW IN 4TH CONG. DISTRICT



County of Prince George 2010 Political Districts and Voting Precincts



District Name	District Number	Senate	Delegate	Polling Station Address
Richard Bland	101	15	04	Rickard Stone Barn Theatre 11301 Johnson Road Petersburg, Virginia 23105
Templeton	102	15	04	South Elementary School 15400 Prince George Drive Doppsville, Virginia 23042
Union Branch	103	16	04	Union Baptist Church 1306 Union Branch Road Petersburg, Virginia 23105
Rives	104	16	02, 03	Walton Elementary School 4101 Cavendish Road Prince George, Virginia 23875
Harrison	105	15	04	Harrison Elementary School 12000 East Oakley Rd Doppsville, Virginia 23042
Bland	201	15	04	H. B. Gerners Jr. High School 7400 Laurel Spring Road Prince George, Virginia 23875
Blackwater	202	15	04	North Elementary School 11100 Old Stage Road Prince George, Virginia 23875
Brandon	203	15	04	Brandonville Community Center 18701 James River Drive Doppsville, Virginia 23042
Courts Blg	204	18	02, 03	Courts Building 5901 Courts Drive Prince George, Virginia 23875
Jefferson Park	205	10	02, 03	Jefferson Park Fire Department Building 4225 Jefferson Park Drive Prince George, Virginia 23875

Voting Precinct	State Senate	State House	County District
101	15	62	1
102	15	63	1
103	16	63	1
104	16	63	1
105	15	64	2
201	15	64	2
202	15	64	2
203	15	64	2
204	18	64	2
205	10	64	2

Legend

- ★ Polling Places
- 2010 Supervisor Districts
- State Senate
- State House
- Streets
- Interstate
- US Highway
- State Route
- Water Bodies
- Fort Lee
- Political Boundaries
- TaxMap Index
- Streams

Voting Precincts

- 101
- 102
- 103
- 104
- 105
- 201
- 202
- 203
- 204
- 205



Map information is believed to be accurate, but accuracy is not guaranteed. The information contained in this data should not be used as a "legal description". Original source material should be consulted. In no event will Prince George County be liable for any damages or other pecuniary loss that may arise from the use of this data. Any errors or omissions should be reported to the Prince George GIS Office.



June 8th, 2011



